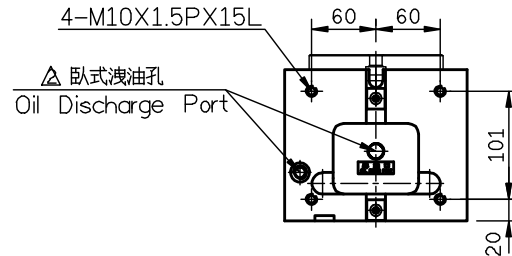
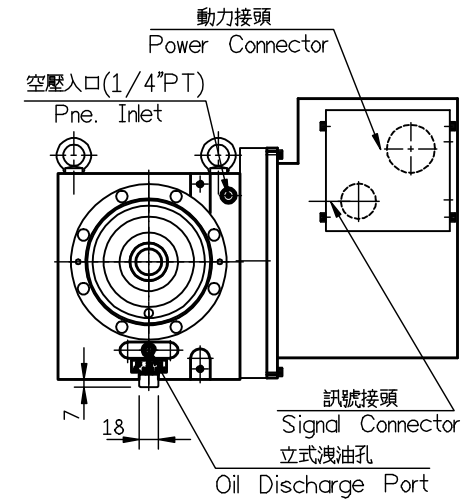
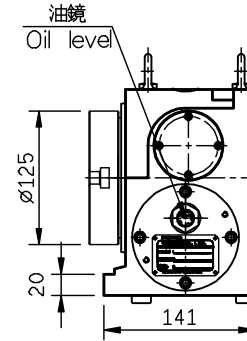
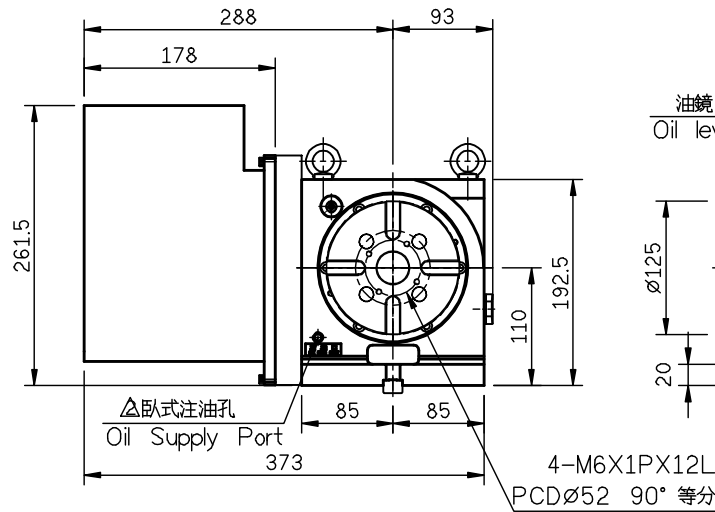
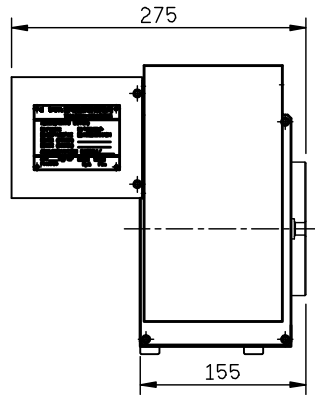
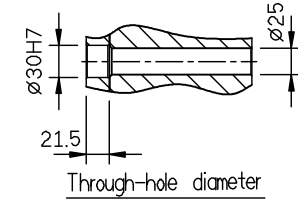
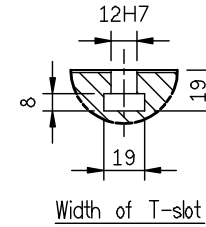
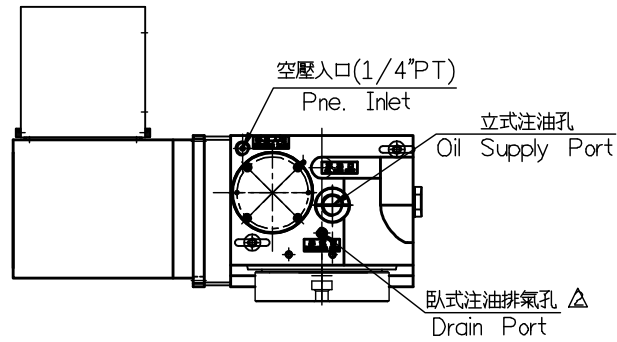


MAX. Loading Capacity	Vertical 50kg Horizontal 100kg
Allowable loading inertia	2 kg-cm-sec <sup>2</sup>
Indexing accuracy	40"
Repeatability	6"
Resolution	0.001°
Allowable cutting torque	8.5 kg-m
MAX. table speed	44.4 rpm
Servo motor type	A2i/B4is
	HF74/105/HA23 ECMAC10807-S
Transmission ratio	1:90
Clamping torque	8 kg-m
Drive pressure	5 kg/cm <sup>2</sup>



GX125PL-B02

加工一般公差	孔與孔中心距公差	表面粗度	比例 SCALE		機型 MODEL	材質 MATERIAL	名稱 TITLE		料號 PART NO.	
<6 ±0.05	<M12 ±0.1	4Ra=S	1=7		GX125PL		Dimensional Drawings			
>6 ±0.07	>M12 ±0.2	一般表示 Ra	ITEM DATE				審圖 繪圖		SHEET 1 of 1	
>20 ±0.1	鑽孔, 銹眼孔公差	32-125	24-01-11	B4i->B4is					A4	
>120 ±0.2	+0.1	8.0-25	07-01-11	圖面整理,本體進版	角法 SKIAGRAPHY	用量 UNIT	備註 REMARKS	核準		
>315 ±0.3	-0.1	2.0-6.3	ITEM DESCRIPTION			1/台				
>1000 ±0.5	角度公差 ±0.5°	0.25-1.6 0.07-0.2								

單號