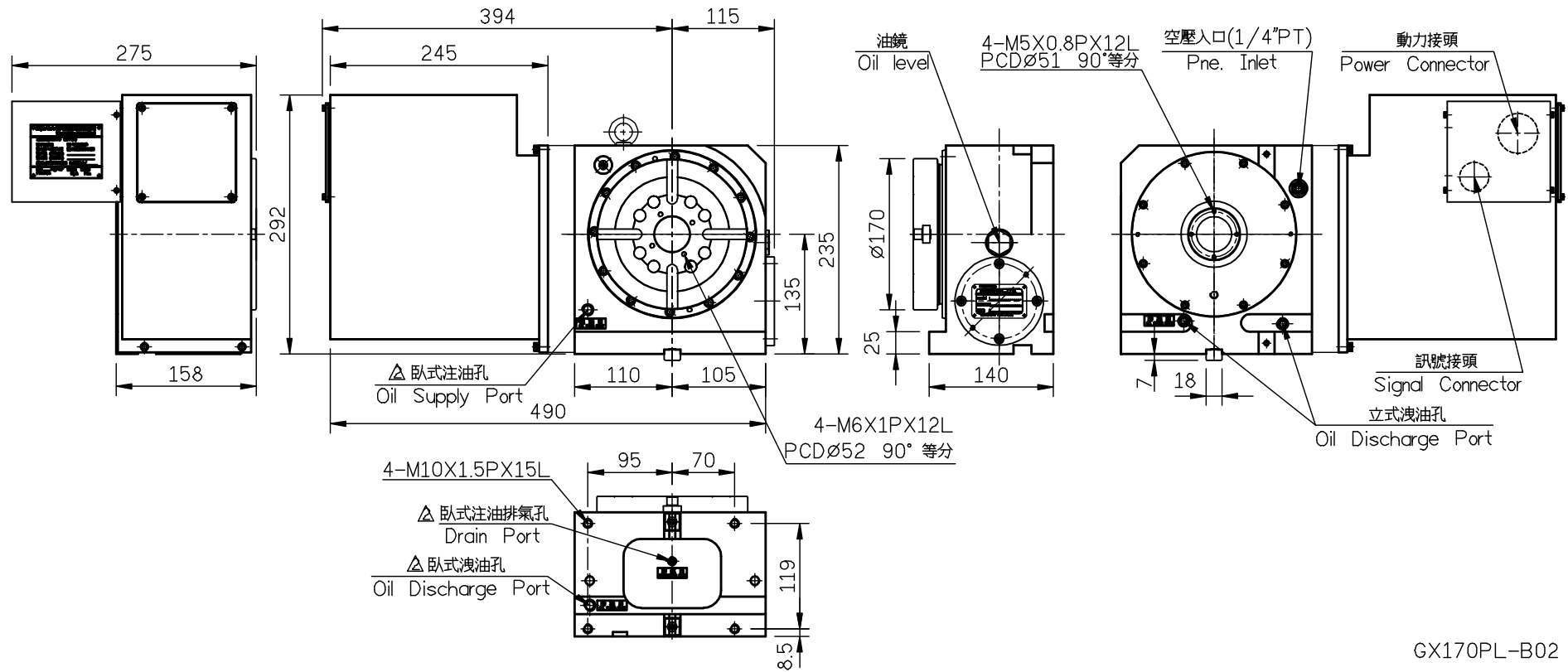
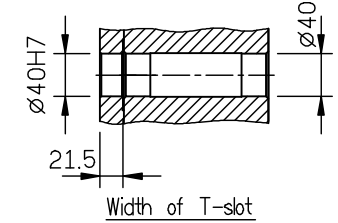
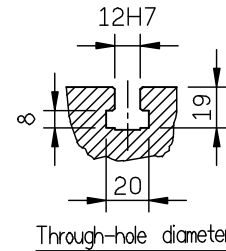
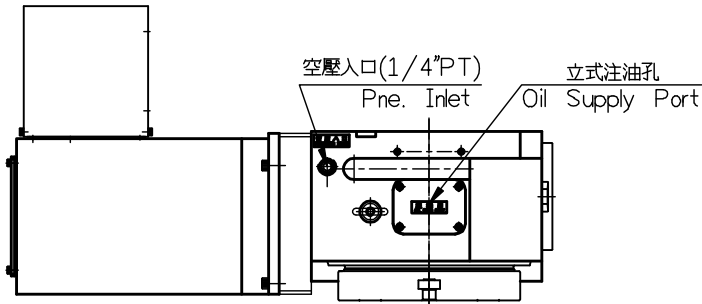


MAX. Loading Capacity	Vertical 75kg Horizontal 150kg
Allowable loading inertia	5.5 kg.cm.s ²
Indexing accuracy	20"
Repeatability	6"
Resolution	0.001°
Allowable cutting torque	17 kg-m
MAX. table speed	44.4 rpm
Servo motor type	A8i/QSY116C 1FK7063/7060
Transmission ratio	1:90
Clamping torque	18 kg-m
Drive pressure	5 kg/cm ²



GX170PL-B02

加工一般公差	孔與孔中心距公差	表面粗糙度	detron		比例 SCALE	機型 MODEL	材質 MATERIAL	名稱 TITLE	料號 PART NO.
<6 ±0.05	<M12 ±0.1	一般表示 Ra			1=7	GX170PL		Dimensional Drawings	
>6 ±0.07	>M12 ±0.2	32-125							
>20 ±0.1	鑽孔, 銹孔公差	8.0-25			用量 UNIT	備註 REMARKS	核準	審圖	繪圖
>120 ±0.2	+0.1	2.0-6.3	角法 SKIAGRAPHY		1/台				
>315 ±0.3	-0.1	0.25-1.6							
>1000 ±0.5	角度公差 ±0.5°	0.07-0.2							
ITEM	DATE	ITEM DESCRIPTION							SHEET 1 of 1

單號