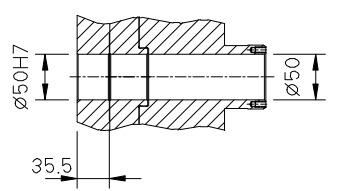
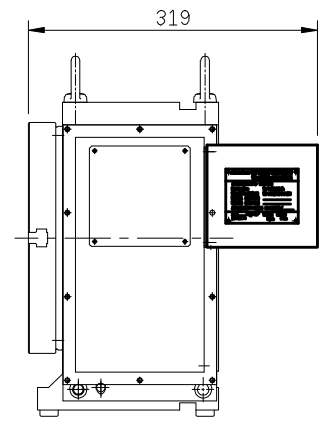
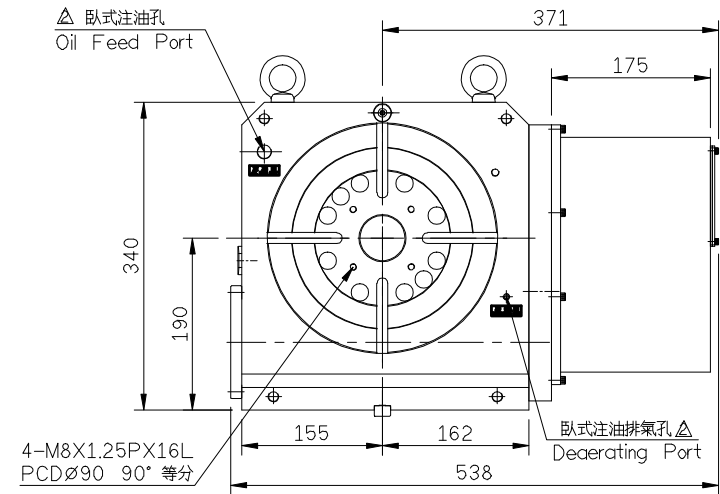
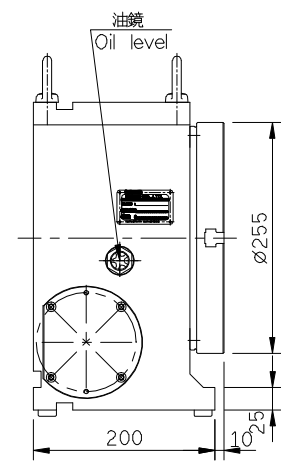
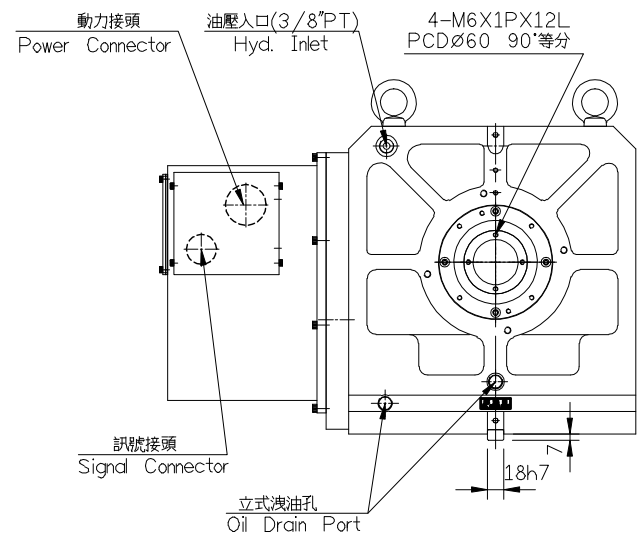
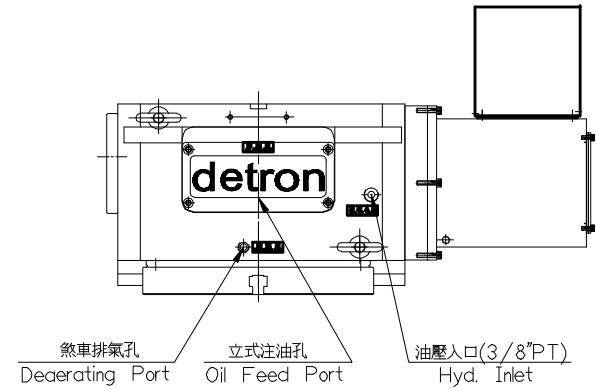
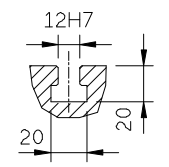


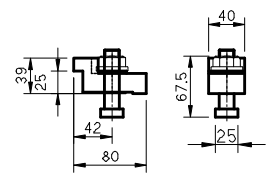
最大工件負載 Max Loading Capacity	立式 Vertical	100kg	伺服馬達型式 Servo motor	FANUC A4i/B8is
	臥式 Horizontal	250kg		HF53~154 HF-H154,HC-H102T SGMGH-09A
許容工件慣量 Allowable Loading Inertia	20.7 kg-cm-sec <sup>2</sup>		減數比 Transmission ratio	1:120
	分割精度 Indexing accuracy	15"		剎車鎖緊力 Clamping torque
重複精度 Repeatability			6"	
	最小設定單位 Resolution	0.001°		
許容切削扭矩 Cutting torque	55 kg-m			
最高迴轉數 Max table speed	22.2 rpm			



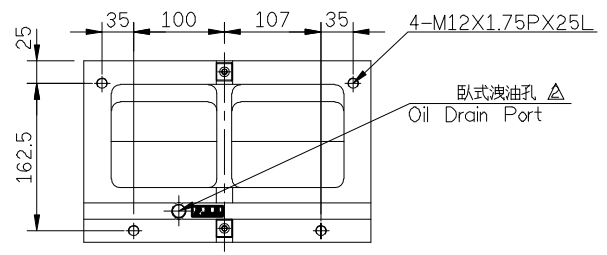
中心孔尺寸  
Through-hole Diameter



T型溝尺寸  
Width of T-slot



壓板外型圖



GX255H-A02

		<b>detron</b>	比例 SCALE 1=8	機型 MODEL GX255H	材質 MATERIAL	名稱 TITLE 外型圖	料號 PART NO.
△	20-01-11	增加SGMGH-09A	角法 SKIAGRAPHY	用量 UNIT	備註 REMARKS	核准	審圖
△	07-01-11	圖面整理,本體油版					
ITEM	DATE	ITEM DESCRIPTION	1/台				SHEET 1 OF 1      A3