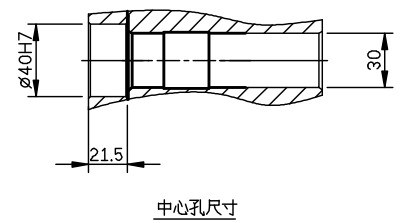
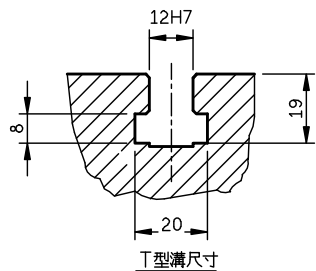
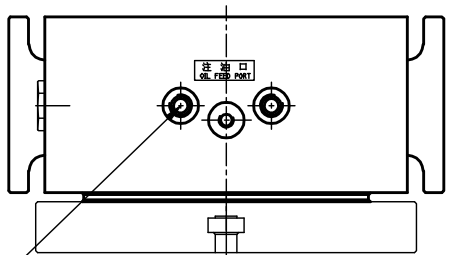
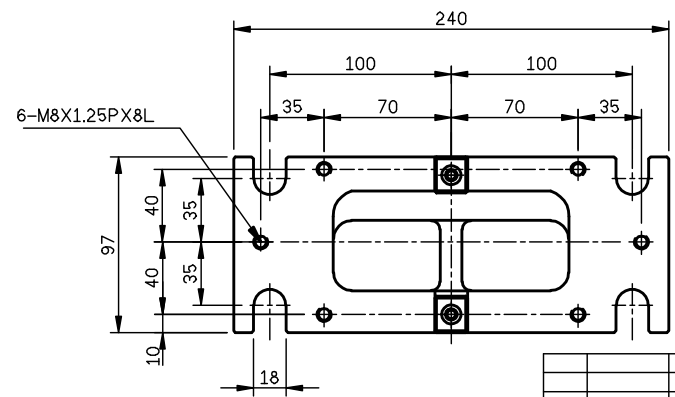
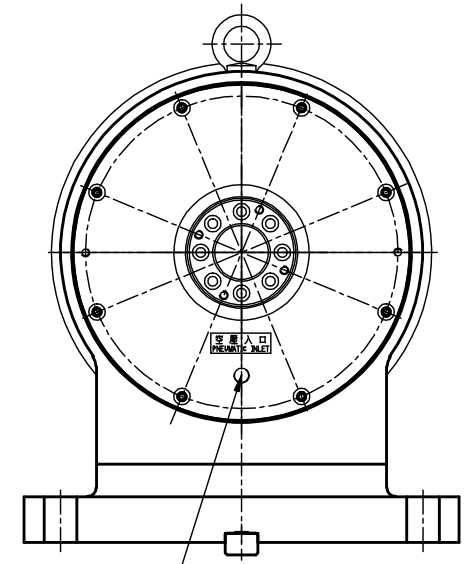
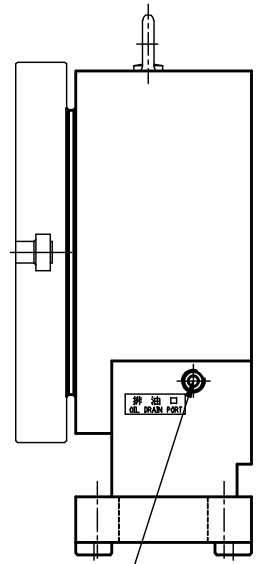
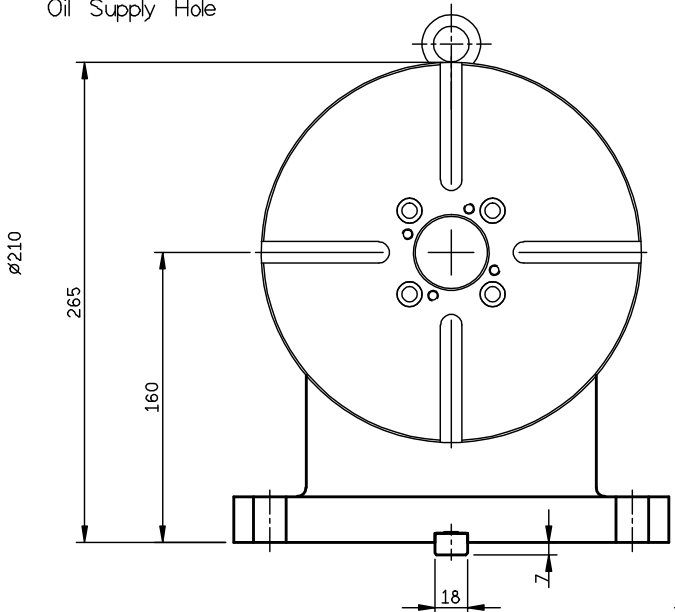
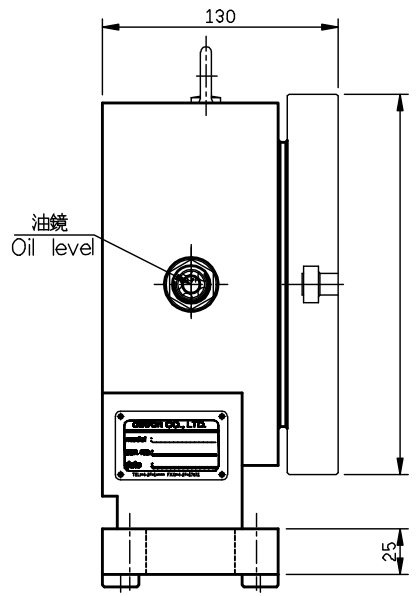


加工一般公差	孔與孔中心距公差	表面粗糙度
<6 ±0.05	<M12 ±0.1	一般表面 Ra
>6 ±0.07	>M12 ±0.2	32-125
>20 ±0.1	溝孔, 角與孔公差	8.0-25
>120 ±0.2		2.0-6.3
>315 ±0.3		0.25-1.6
>1000 ±0.5	角度公差 ±0.5°	0.07-0.2



注油孔
Oil Supply Hole



SR210P-A01

		detron	比例 SCALE	機型 MODEL	材質 MATERIAL	名稱 TITLE	料號 PART NO.
		角法 SKIAGRAPHY	數量 UNIT	備註 REMARKS	核准	審圖 繪圖	版次 XX
▲ 00'00'00	XXXXX						
ITEM DATE	ITEM DESCRIPTION						SHEET 1 of 1 A3