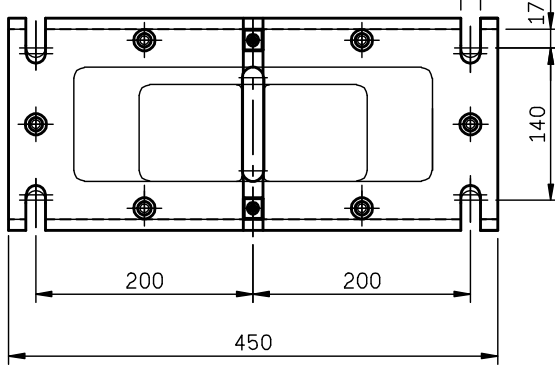
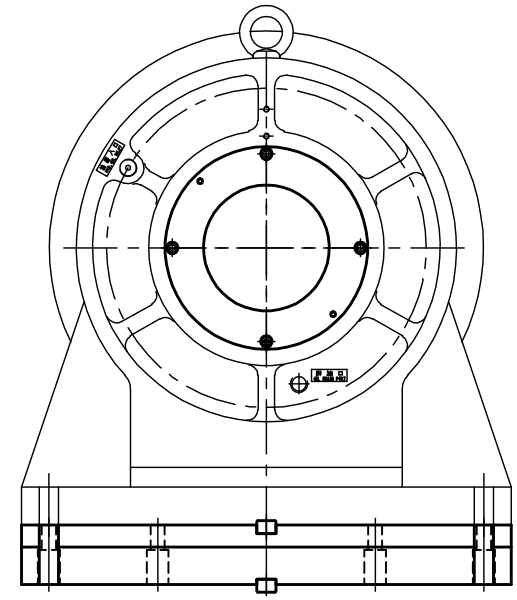
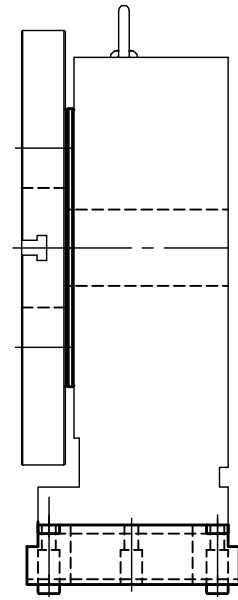
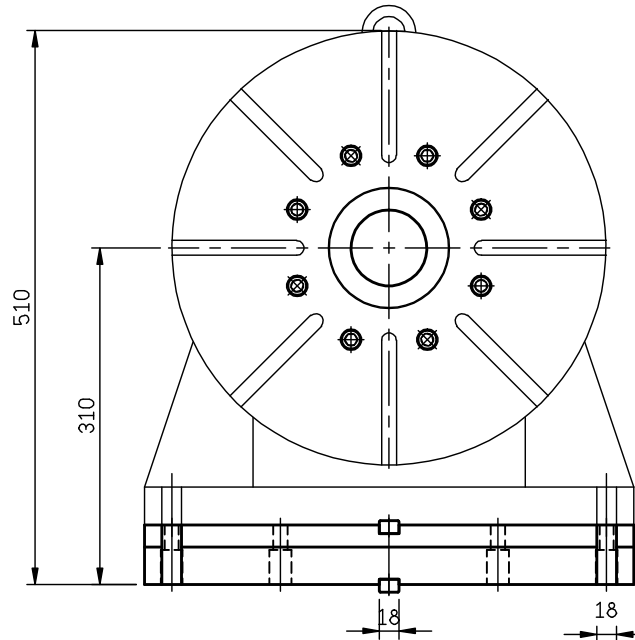
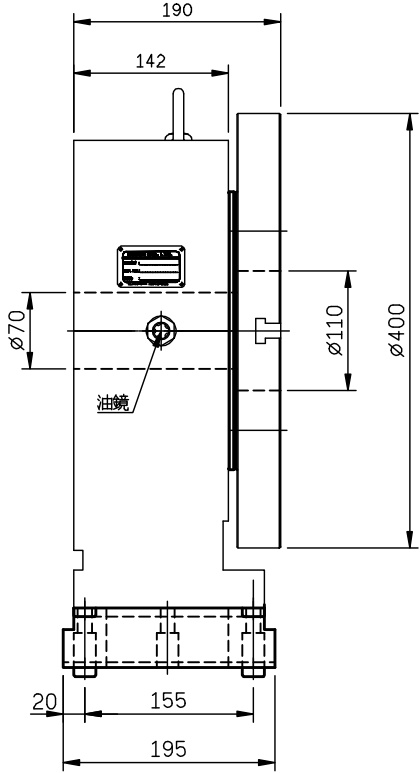
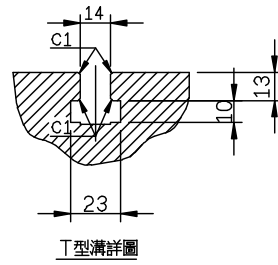
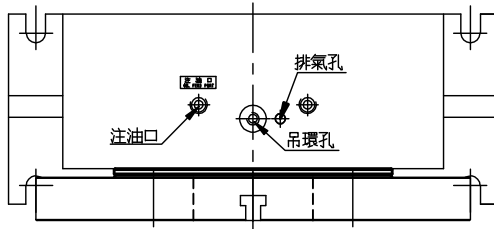


加工一般公差	孔與孔中心距公差	表面粗糙度 4Rz=S
<6 ±0.05	<M12 ±0.1	一般要求 Ra
>6 ±0.07	>M12 ±0.2	32-125
>20 ±0.1	圓孔, 角與孔公差	8.0-25
>120 ±0.2	+0.1	2.0-6.3
>315 ±0.3	-0.1	0.25-1.6
>1000 ±0.5	角與公差 ±0.5°	0.07-0.2



1.6 / (0.4) ^G

未標註之加工倒角做C1

		detron	比例 SCALE 1=5	機型 MODEL SR500H	材質 MATERIAL	名稱 TITLE SR500H外型圖	料號 PART NO.
角法 SKIAGRAPHY	用量 UNIT 1/台	備註 REMARKS	核准	審圖	繪圖	版次	
00'00'00	XXXXX						
ITEM DATE	ITEM DESCRIPTION						SHEET 1 of 1 A3